



PUBLIC WORKS DEPARTMENT
180 Vickers Drive
Milford, DE 19963

PHONE 302.422.1110
FAX 302.422.1117
www.cityofmilford.com

YOUR SOLID WASTE COLLECTION SERVICES ARE CHANGING!!

The City of Milford Public Works Department is pleased to announce improved services to your refuse, recycling, and bulk waste collection effective **June 19, 2017**. Customers will begin receiving **weekly** recycling and yard waste services. Recycling collection will be on the same day as your refuse collection. In addition, we are pleased to once again offer brush collection.

In order to implement these changes, four new routes have been created, **so your refuse or recycling collection day may be changing**. Yard waste will be collected on Mondays (except on holidays). Enclosed with your May Utility bill you will find a new 2017-2018 Solid Waste Schedule with your New Collection Days. You may also visit our website at www.cityofmilford.com/solidwaste for a street-by-street listing schedule.

The acquisition and deployment of automated collection equipment has enabled us to provide the improved services. Automated collection is a safer collection method, reducing the risk of injury to employees from exposure to sharp items and household hazardous waste, dust, weightlifting, and vehicular collisions. Additionally, current City employees will remain employed to enhance services. The new collection equipment will not result in lay-offs.

While we strive to better serve you, we need your assistance in moving forward. Here are a few helpful tips that will make this any easy transition.

- ❖ Place carts within 3 feet from curb.
- ❖ Carts must be at least 3-5 feet apart, away from trees, mailboxes, parked cars or fixed objects.
- ❖ Wheels on the cart must face the house.
- ❖ All material must fit within the cart, with the lid closed. (Please call for additional containers, if needed)
- ❖ Please do not use bungee cords or weights (bricks, rocks, etc.) on cart lids.
- ❖ Excess trash/yard waste outside cart will not be collected.
- ❖ Personal containers will not be collected.
- ❖ Please call to schedule bulk and brush collection (Each week has a limit on number of collections)

Your participation in the collection of recycling materials and yard waste, helps keep your refuse bills low. Recycling materials are deposited at no charge, and yard waste is deposited for about 1/3 of the cost of landfilling. Landfilling these materials presently costs \$83 per ton. However, we need your help in the proper placement of materials. The mixing of materials creates additional costs. Placing refuse in yard waste and recycling containers, or recycling materials in yard waste containers, or yard waste in refuse containers results in contamination of your materials. City collection of contaminated materials results in the contamination of the entire truckload of material, and the City is subject to steep fines by the State and our compost vendor for this type of contamination. For this reason, we will not service your container if we find that it is contaminated.

You may receive colored informational tags on your cart regarding placement, trash overflow, contamination, etc. The tags are used to communicate with customers, so that they may help us be as efficient as possible.

For information regarding these new changes, please review the information enclosed with your May utility bill or visit www.cityofmilford.com/solidwaste or contact Customer Service at 302-422-6616.

THANK YOU FOR YOUR PATIENCE AND UNDERSTANDING WHILE WE IMPLEMENT THESE CHANGES!!

RIVER TOWN • ART TOWN • HOME TOWN

HELPFUL INFORMATION & REMINDERS

TIME/PLACEMENT: City containers should be placed at the curb by 7 a.m. the day of collection and be removed by 7 p.m. the day of collection. Please place carts within 3 feet of the curb, at least 5 feet apart, and ideally on either side of the driveway with wheels facing your house. Please do not place carts near trees, mailboxes or other fixed objects. All material must be placed in City provided carts as our equipment cannot collect personal containers. All materials must fit within the cart, with the lid closed. Excess trash and yard waste outside cart will not be collected. Please do not use bungee cords or weights (bricks, rocks, etc.) on cart lids. Additional containers are available, please call Customer Service for fees at 302-422-6616.

EXCLUDED ITEMS: Tree stumps, rocks, dirt, sod, bricks, tires, iron, wet paint, construction materials, automobile batteries, propane tanks, flammables, hazardous & toxic waste and as well as other items are restricted by the landfill and cannot be collected. Visit our website, www.cityofmilford.com/solidwaste or www.dswa.com for more details on what is not accepted at the landfill.

CONTAMINATION: Placing refuse in recycling or yard waste containers is prohibited and will be cause for non-collection of the container. Residents can be subject to a fine in accordance with the City of Milford Code. The issuance of three (3) problem notice tags will result in removal of City container. Additional containers are available, please call Customer Service for fees at 302-422-6616.

BULK/BRUSH SERVICE

- Pre-scheduled Bulk Waste/Brush will be collected each Monday, with the exception of holidays.
- Each customer will receive two bulk waste/brush collections (maximum of 4 cubic yards) per calendar year at no extra charge, up to 4 cubic yards each collection (bulk or brush).
- Additional collection beyond the two (2) no charge collections will be charged at a rate of \$50 for each 4 cubic yards per stop, with a maximum of 20 cubic yards in a calendar year. Charges will be billed to the utility account.
- Bulk trash is defined as "Large items". Furniture, appliances, mattress, lawn mowers, BBQ grills, TV's, air conditioners, water heaters, doors, cabinets and other types of large household items that require special handling.
- Brush must be placed neatly at the curb, butt end toward the street, cut in lengths and stacked that one person can handle, and be no greater than 4" in diameter. Please do not place brush in streets and do not block sidewalks.
- Customers are required to call 302-422-6616 to schedule a pick-up. There are a limited number of pick-ups each Monday, and they will be scheduled on a first-come, first served basis. Once the schedule for the week is full, you will be scheduled for the next available pick-up day. Please do not place items for collection until you have confirmed your scheduled pick-up.
- Customers without prior pickup arrangements will be tagged and notified of subsequent billing. Items not removed by customer within 48 hours will be removed by the City and billed accordingly.

RECYCLING SERVICE

- **Weekly recycling service** is offered with your refuse collection, and will be collected on the same day as refuse collection
- Please rinse metal cans, and plastic and glass containers from food particles; break down cardboard boxes; and place loose paper in a paper bag (to prevent paper from blowing) before placing the items in your cart for collection.
- Please visit our website at www.cityofmilford.com/solidwaste or www.dswa.com if you have any questions on what is acceptable or unacceptable for recycling.
- Placing trash or yard waste in recycling containers is prohibited and will be cause for non-collection of the container. The issuance of three (3) problem notice tags will result in removal of the City container.

YARD WASTE SERVICE

- **Weekly yard waste service** is offered year-round on Mondays, with the exception of holidays.
- Yard waste piles and limbs outside of the container will be collected on a scheduled basis and is considered "Brush Collection". Please see, **Bulk/Brush Service for more information.** Alternative places to take excess yard waste: **Blessings Greenhouse 302-684-8990 or DSWA Milford Transfer Station 302-424-2968.**
- It is unacceptable to place any yard waste into a City issued trash or recycle container. Trash, Recycling and Yard Waste must be kept in their respective containers.
- Placing trash or recycling materials in yard waste containers is prohibited and will be cause for non-collection of the container. The issuance of three (3) problem notice tags will result in removal of City container.
- Additional yard waste containers are available for a monthly fee of \$12.00. Please call our Customer Service Department at 302-422-6616 for more details.

FALL LEAF COLLECTION

- **Bi-weekly leaf collection** is provided for the months of November through December and a **weekly collection** in January. For more details on a collection schedule, please visit the city website at www.cityofmilford.com/solidwaste and watch for ads in the local newspapers in October.
- Leaves must be raked to the curb or to the furthest point of the lawn by 7:00 A.M. on Mondays of your collection week.
- Leaves cannot block the sidewalk or be raked into the roadway.
- You may wish to place a tarp over your leaves to keep leaves from blowing.
- Due to equipment and personnel limitations, each area may take several days to collect and subjected to weather conditions and demand. Please be patient as our crews work as expeditiously as possible to provide this service.

FOR QUESTIONS, PLEASE CALL CUSTOMER SERVICE AT (302) 422-6616



2017-2018 Solid Waste Schedule

Jun-17						
S	M	T	W	T	F	S
18	19	20	21	22	23	24
25	26	27	28	29	30	

Jul-17						
S	M	T	W	T	F	S
						1
2	3	4	5	6	7	8
9	10	11	12	13	14	15
16	17	18	19	20	21	22
23	24	25	26	27	28	29
30	31					

Aug-17						
S	M	T	W	T	F	S
		1	2	3	4	5
6	7	8	9	10	11	12
13	14	15	16	17	18	19
20	21	22	23	24	25	26
27	28	29	30	31		

Sep-17						
S	M	T	W	T	F	S
					1	2
3	4	5	6	7	8	9
10	11	12	13	14	15	16
17	18	19	20	21	22	23
24	25	26	27	28	29	30

Oct-17						
S	M	T	W	T	F	S
1	2	3	4	5	6	7
8	9	10	11	12	13	14
15	16	17	18	19	20	21
22	23	24	25	26	27	28
29	30	31				

Nov-17						
S	M	T	W	T	F	S
			1	2	3	4
5	6	7	8	9	10	11
12	13	14	15	16	17	18
19	20	21	22	23	24	25
26	27	28	29	30		

Dec-17						
S	M	T	W	T	F	S
					1	2
3	4	5	6	7	8	9
10	11	12	13	14	15	16
17	18	19	20	21	22	23
24	25	26	27	28	29	30
31						

Jan-18						
S	M	T	W	T	F	S
	1	2	3	4	5	6
7	8	9	10	11	12	13
14	15	16	17	18	19	20
21	22	23	24	25	26	27
28	29	30	31			

Feb-18						
S	M	T	W	T	F	S
				1	2	3
4	5	6	7	8	9	10
11	12	13	14	15	16	17
18	19	20	21	22	23	24
25	26	27	28			

Mar-18						
S	M	T	W	T	F	S
				1	2	3
4	5	6	7	8	9	10
11	12	13	14	15	16	17
18	19	20	21	22	23	24
25	26	27	28	29	30	31

Apr-18						
S	M	T	W	T	F	S
1	2	3	4	5	6	7
8	9	10	11	12	13	14
15	16	17	18	19	20	21
22	23	24	25	26	27	28
29	30					

May-18						
S	M	T	W	T	F	S
		1	2	3	4	5
6	7	8	9	10	11	12
13	14	15	16	17	18	19
20	21	22	23	24	25	26
27	28	29	30	31		

Jun-18						
S	M	T	W	T	F	S
					1	2
3	4	5	6	7	8	9
10	11	12	13	14	15	16
17	18	19	20	21	22	23
24	25	26	27	28	29	30

- City Holiday - NO SOLID WASTE COLLECTIONS
- City Wide - Yard Waste & Scheduled Bulk/Brush
- ROUTE 1
- ROUTE 2
- ROUTE 3
- ROUTE 4
- HOLIDAY COLLECTION - ROUTES 1 & 2 (NO RECYCLING COLLECTION - July 5 & Dec 27)
- HOLIDAY COLLECTION - ROUTES 3 & 4 (NO RECYCLING COLLECTION - Nov 9, Nov 24, Mar 29)

SOLID WASTE "NEW" TRASH ROUTES

MONDAY – CITY WIDE YARD WASTE & SCHEDULED BULK/BRUSH COLLECTION (NO COLLECTION ON MONDAY HOLIDAYS)

ROUTE 1 – NORTH OF RT. 14 (NW/NE FRONT ST.)

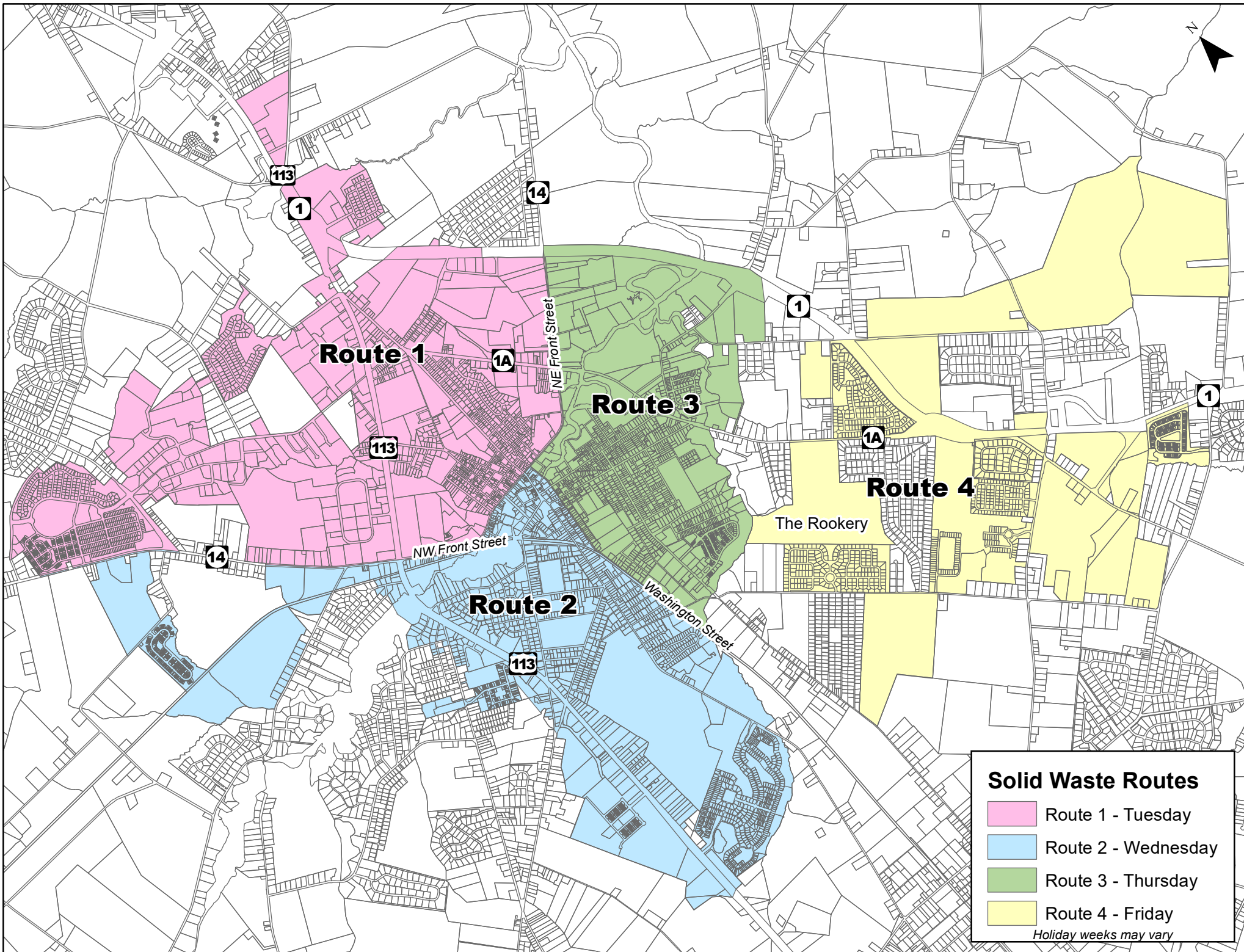
ROUTE 2 – SOUTH OF RT. 14 (NW FRONT ST.) & WEST OF WASHINGTON ST.

ROUTE 3 – SOUTH OF RT. 14 (NE FRONT ST.) & EAST OF WASHINGTON ST. & NORTH OF THE ROOKERY, A.K.A. SHAWNEE COUNTRY CLUB.

ROUTE 4 – SOUTH OF THE ROOKERY, A.K.A. SHAWNEE COUNTRY CLUB & EAST OF WASHINGTON ST. (HEARTHSTONE MANOR, MEADOWS AT SHAWNEE, MAITLAND ESTATES, ORCHARD HILL)

FOR A STREET-BY-STREET LISTING, VISIT WWW.CITYOFMILFORD.COM/SOLIDWASTE.

PLEASE CALL THE CUSTOMER SERVICE DEPARTMENT AT 422-6616 FOR QUESTIONS OR TO SCHEDULE A BULK/BRUSH COLLECTION.



Solid Waste Routes

- Route 1 - Tuesday
- Route 2 - Wednesday
- Route 3 - Thursday
- Route 4 - Friday

Holiday weeks may vary